

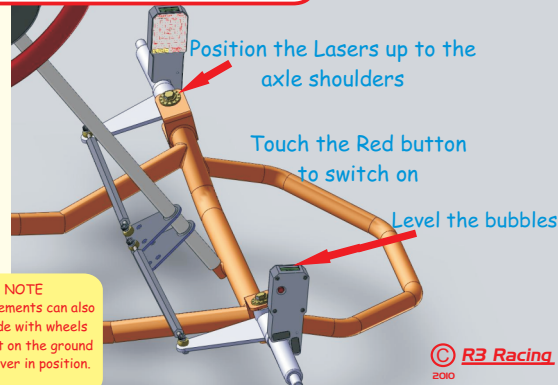


Kelgate Performance
www.kelgate.com

FRONT LASERS

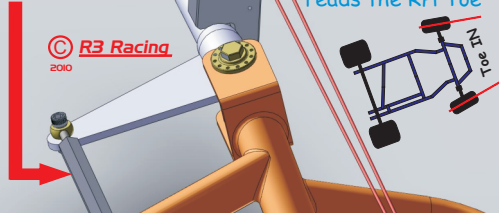
5 STEP SET UP

- 1 Remove the front wheels
- 2 Check steering trunion is central
- 3 Restrain the steering column
- 4 Loosen up King pins and track rods
- 5 FIT FRONT LASERS



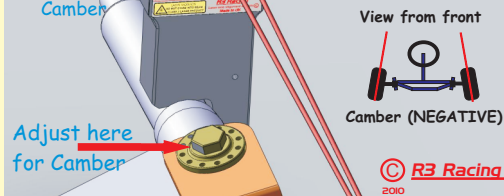
1 - TOE

Adjust track rods for TOE on each side



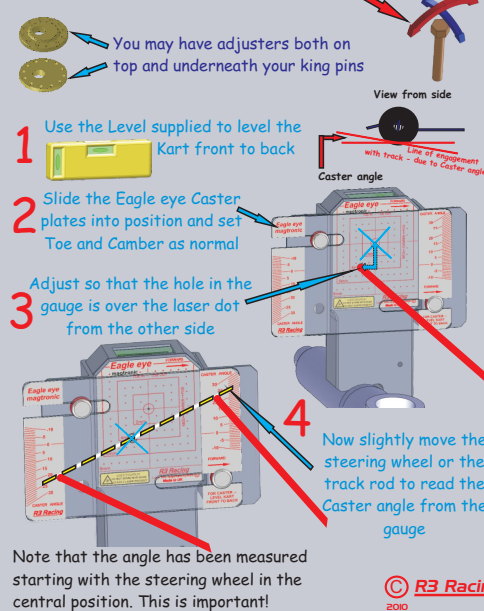
2 - CAMBER

IMPORTANT!
The LH target reads the RH Camber



3 - CASTER

King pin from front to back adjusts the Caster angle
King pin from side to side adjusts the Camber

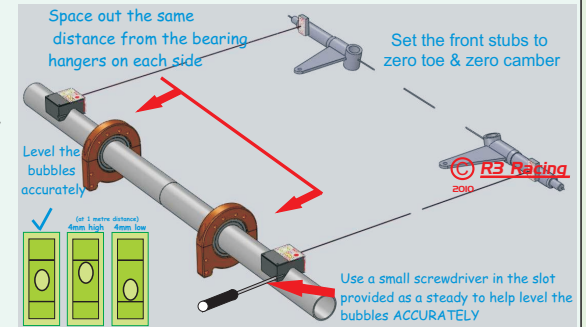


Chain Wheel Aligner, Steering Column Restraint & Steering Column Centraliser instructions overleaf

REAR LASERS

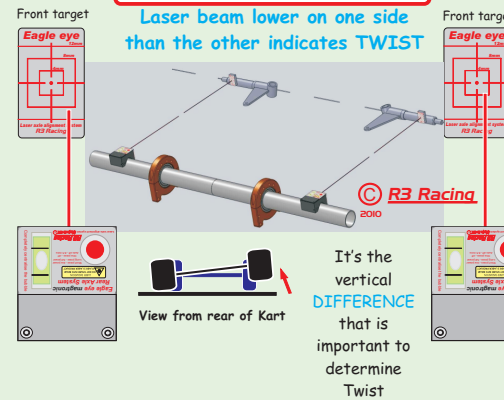
5 STEP SET UP

- 1 Position the kart on a fixed table (this table does not have to be level)
- 2 Lock or Fix the steering column centrally
- 3 Lock the brakes on
- 4 Set up the front axles (spindles) to zero toe & zero camber position
- 5 FIT REAR LASERS



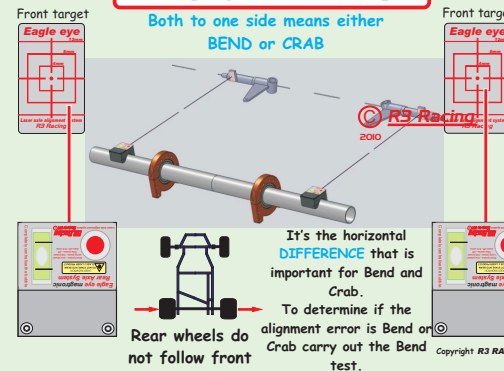
1 - TWIST TEST

Laser beam lower on one side than the other indicates TWIST



2 - BEND or CRAB TEST

Both to one side means either BEND or CRAB



3 - BEND TEST

Fit one rear Eagle eye Magtronic to the front and one to the rear axle as shown

