

# Eagle eye magtronic

## Laser rear axle alignment system

Thankyou for purchasing the **Eagle eye magtronic** laser rear axle alignment system.

We hope this equipment will give you many years of service and live up to the name of **R3 Racing** for good product design at an affordable price.

The **Eagle eye magtronic** contains many novel features and design advantages.

Please take time to read and understand the instructions in order to get the best from this equipment.

### What it can do.

**Eagle eye magtronic** enables the Twist, Bend and Crab to be measured on most types of Kart. It has the ability to fit axles ranging from 17 to 50mm (3/4 to 2 inches) diameter.

It is intended to be used in conjunction with our Front axle alignment system to provide a complete set-up arrangement.

### Specification.

Light source	: Class II solid state laser	Axle sizes	: 17mm to 50mm (3/4 to 2 inches)
Control	: Multi mode Microprocessor controlled beam either modulated or full beam	Material	: Aircraft grade Aluminium alloy for body
Power	: Lithium primary cell type CR2 (commonly available)	Finish	: Hard anodised for long life
Battery life	: Sleep mode up to 5 years : Wake mode up to 70 hours continuous use	Weight	: Each unit weighs approximately 155gm
		Magnet	: Rare earth Neodymium

Operation : Short press for LOW power - long press (1 sec) for FULL power  
: One press for OFF : Auto OFF after about 8.5 minutes

R3 Racing reserves the right to change specifications without notice **Maintainance.**

Keep clean by removing excess oil and other materials. Avoid water and keep from rain. This product is not waterproof. Do not drop. (R3 Racing provides a recalibration service should this occur.) To replace the battery remove the 2 screws. This exposes the battery which can be gently prized from its holder and replaced. Note carefully the polarity!!

Copyright R3 RACING

### Warranty.

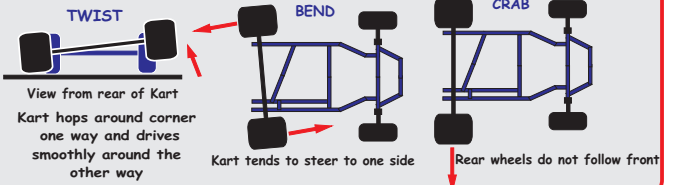
This product is warrantied against faulty materials and workmanship for 12 months. Applies to UK and NI only.

[www.kelgate.com](http://www.kelgate.com)

Email: [sales@kelgate.com](mailto:sales@kelgate.com)

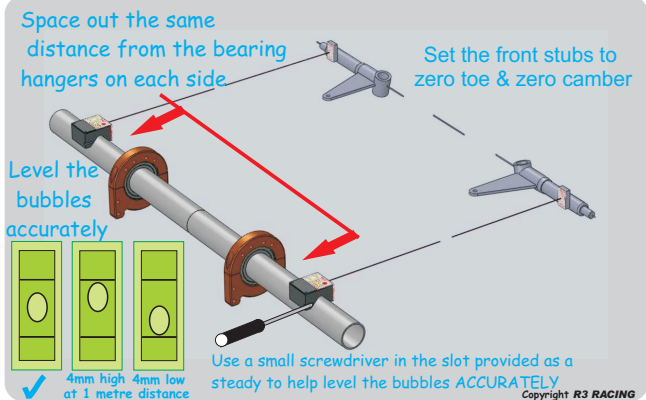


## BASICS



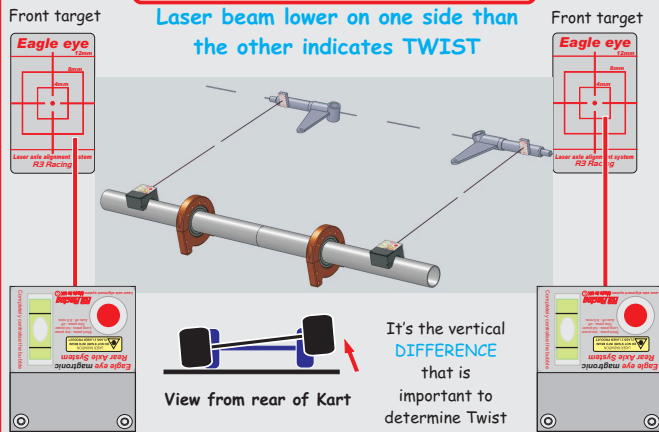
- 1 Position the Kart on a fixed table. This table does not have to be level.
- 2 Lock or fix the steering column centrally.
- 3 Lock the brakes on.
- 4 Set up the front stub axles (splindles) to a zero Toe and zero Camber position

## FIT REAR LASERS



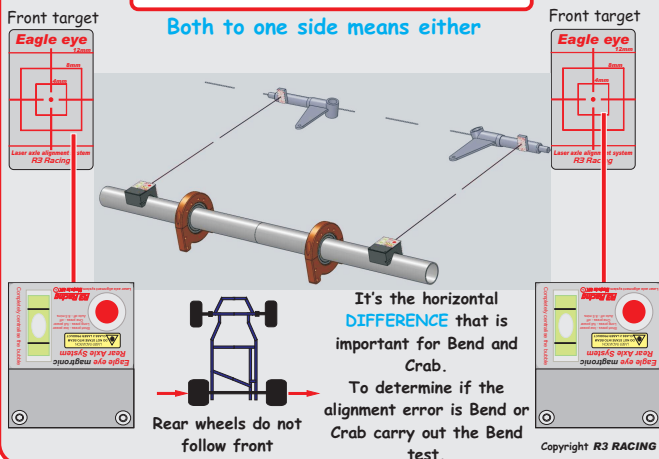
## 1 - TWIST TEST

Laser beam lower on one side than the other indicates TWIST



## 2 - BEND or CRAB TEST

Both to one side means either



## 3 - BEND TEST

- 1 Fit one rear Eagle eye magtronic to the front and one to the rear axle as shown
- 2 FOR THIS TEST YOU DO NOT HAVE TO LEVEL THE BUBBLES
- 3 Now try to point the lasers at the centre of each others target

